

GREATERSPORT

**WORKFORCE
BOROUGH PRESENTATION
ROCHDALE**

A photograph of children playing soccer on a grassy field. The image is overlaid with a semi-transparent purple and blue gradient. In the foreground, a young girl with long blonde hair, wearing a striped shirt and a dark dress, is focused on a soccer ball. To her right, a boy in a white and grey long-sleeved shirt and jeans is also playing. In the background, another child is visible, and the scene is set outdoors on a grassy area.

ETHNICITY OF RESIDENTS ROCHDALE

1.69%

Of the population of Rochdale are mixed. compared to 2.26% in GM.

14.9%

Of the population are Asian. compared to 10.2% in GM.

1.31%

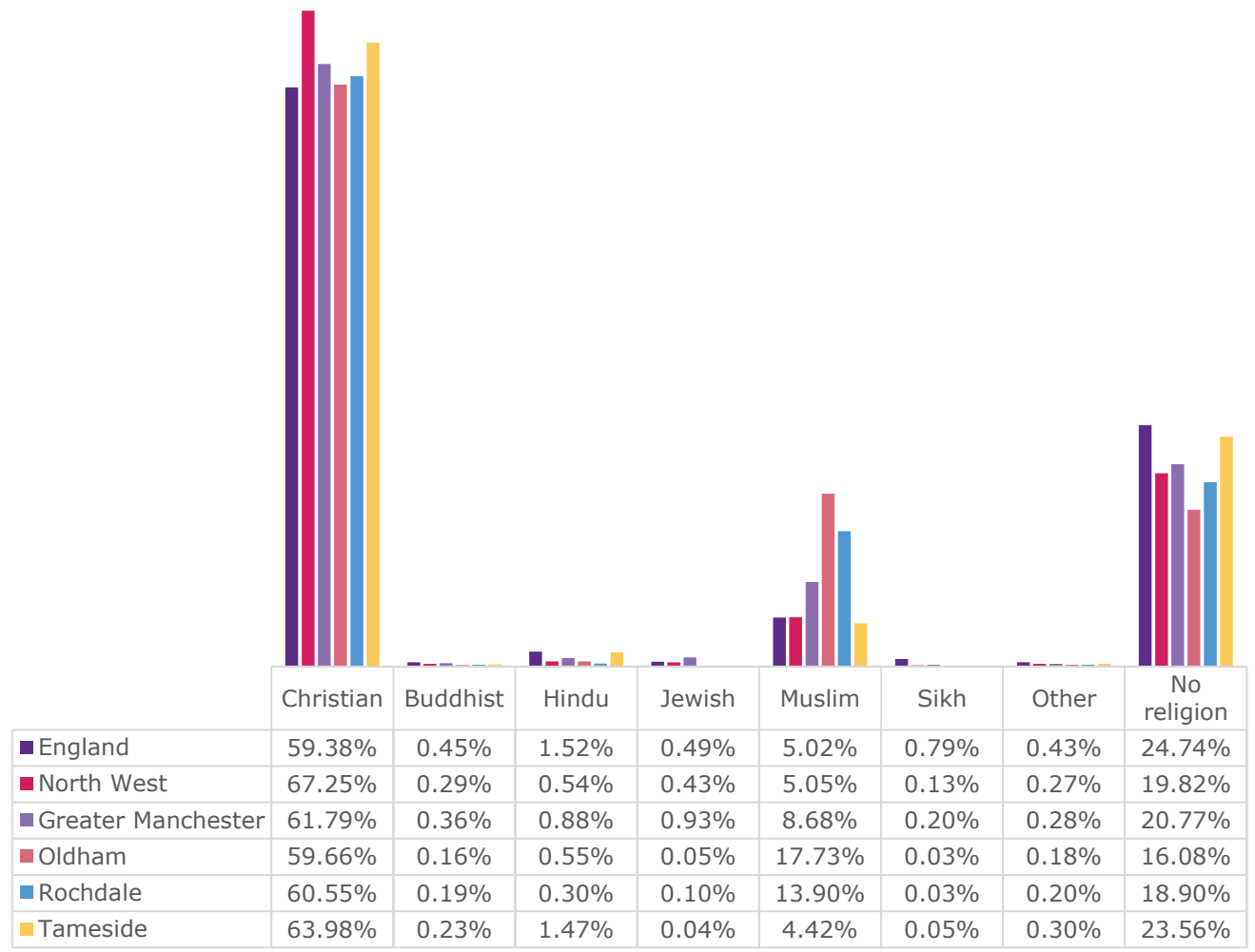
Of the population are black compared to 2.8% in GM.

0.40%

Of the population are other. compared to 1.02% in GM.



ETHNICITY OF RESIDENTS



■ England ■ North West ■ Greater Manchester ■ Oldham ■ Rochdale ■ Tameside



ETHNICITY OF RESIDENTS

Consultation conducted across GM with Faith Centres VIA 8 Focus Groups and 160 survey responses, identifying:

MOTIVATIONS

STAYING HEALTHY/ WEIGHT LOSS - WOMEN
SOCIAL ASPECT AND HAVING A FRIEND TO GO WITH
LEARNING A NEW SKILL
FAITH & HEALTH – PARTICULARLY HINDUISM

BARRIERS

MARRIAGE & FAMILY COMMITMENTS - FEMALES
LANGUAGE BARRIER / PARENTAL ATTITUDES – OLDER GENERATION
NOT FEELING WELCOME IN NON BAME ENVIRONMENT
LACK OF BAME ROLE MODEL
LACK OF AWARENESS OF OPPORTUNITIES

RECOMMENDATIONS

USE FAITH CENTRES AS A HUB
TRAIN FAITH CENTRE VOLUNTEER WORKFORCE
MESSAGE – BRING FAMILY AND COMMUNITY TOGETHER
SUPPORT TO CONNECT TO FUNDING WITH OTHER SPORT/PA ORGANISATIONS





UNEMPLOYMENT & NEETS

01 /

% of people who are unemployed.

5.8% ROCHDALE

Compared to 4.9% in GM and 4.0% in England.

02 /

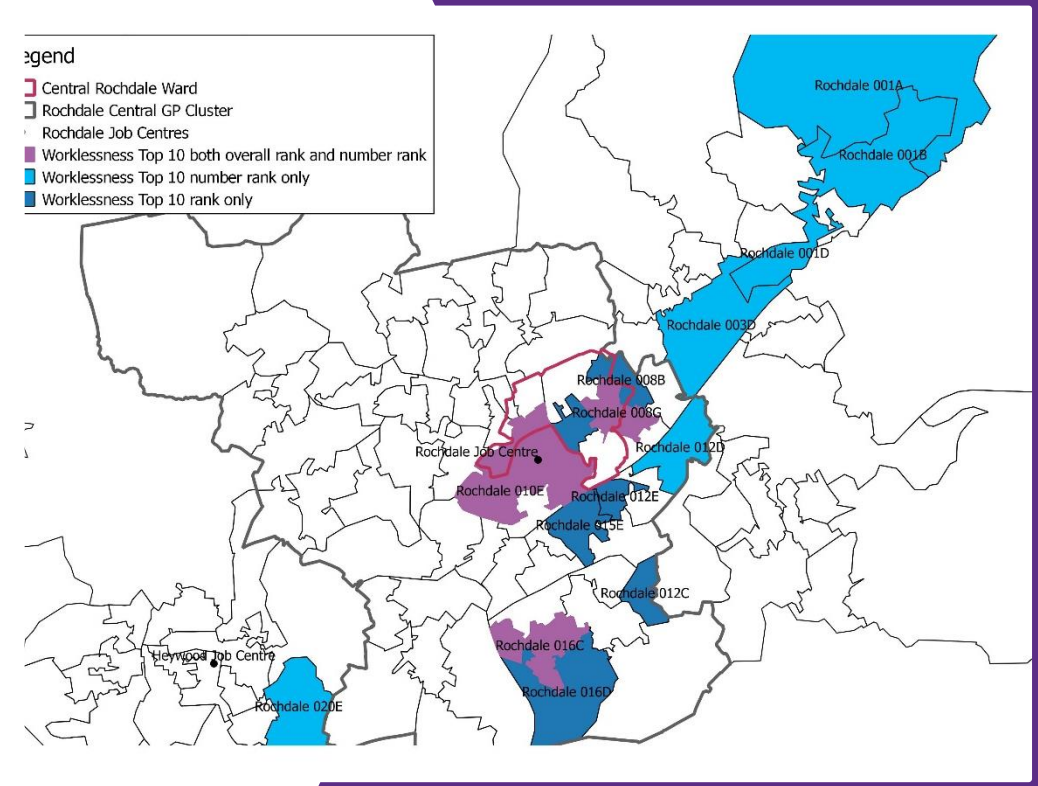
% of NEET Young people

7.3% ROCHDALE

Compared to 6.9% in GM and 6.0% in England.

WORKLESSNESS IN ROCHDALE

The coloured areas have highest prevalence of worklessness in Rochdale.



DISABILITY & MENTAL WELLBEING ROCHDALE

20.9%

Of people in Rochdale with a long term disability or health condition, compared to 17.6% in England and 19.43% in Greater Manchester.

4.7%

Of people in Rochdale have low worthwhile, compared to 3.6% of people in England.

20.8%

Of people in Rochdale have high levels of anxiety, compared to 19.9% in England.

9.0%

Of people in Rochdale have low happiness, compared to 8.5% of people in England.

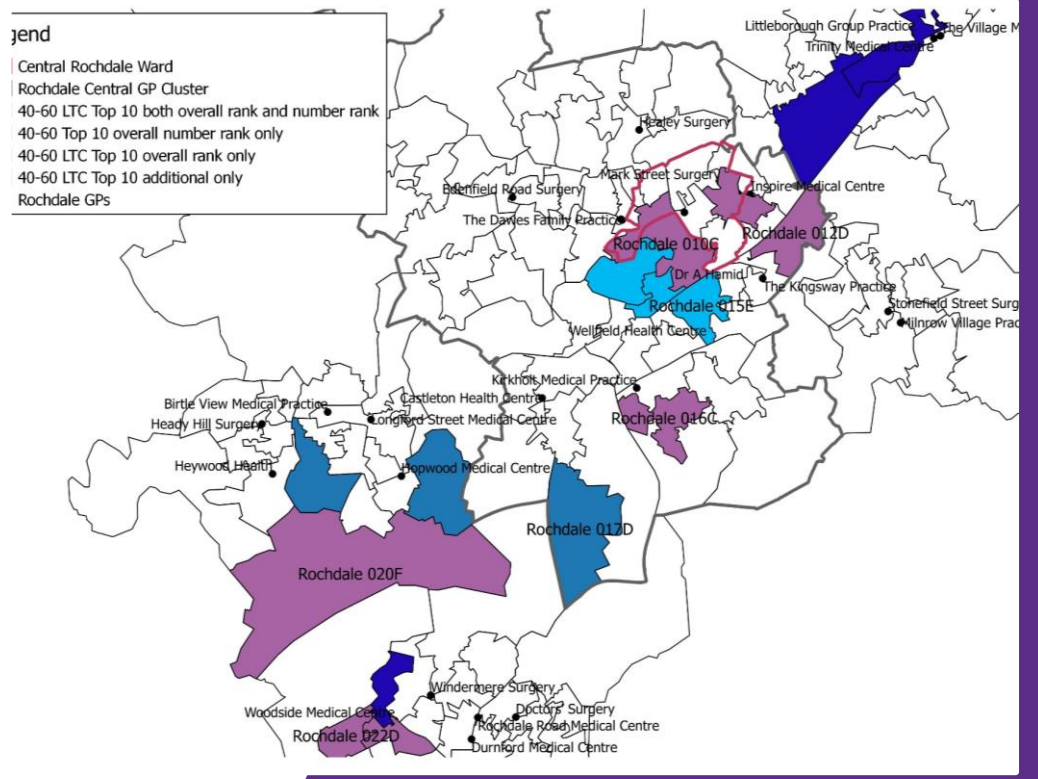
7.1%

Of people in Rochdale have low satisfaction, compared to 4.5% in England.



40-60 YEAR OLDS LONG TERM HEALTH CONDITIONS ROCHDALE

The coloured areas have highest prevalence of Long Term Health conditions in Rochdale.



GREATERSPORT

VOLUNTEERING VCSE SECTOR STATE OF THE SECTOR



A joint venture to support
the local VCSE sector
in the ten boroughs of
Greater Manchester

HOW MANY ORGANISATIONS IN THE VCSE SECTOR?

There are an estimated 15,890 organisations in GM, 77% are micro organisations with an income below £10,000

1,180 ORGANISATIONS IN ROCHDALE (293 REGISTERED)

77% MICRO ORGANISATIONS

26,400 VOLUNTEERS

2,100 FTE PAID STAFF

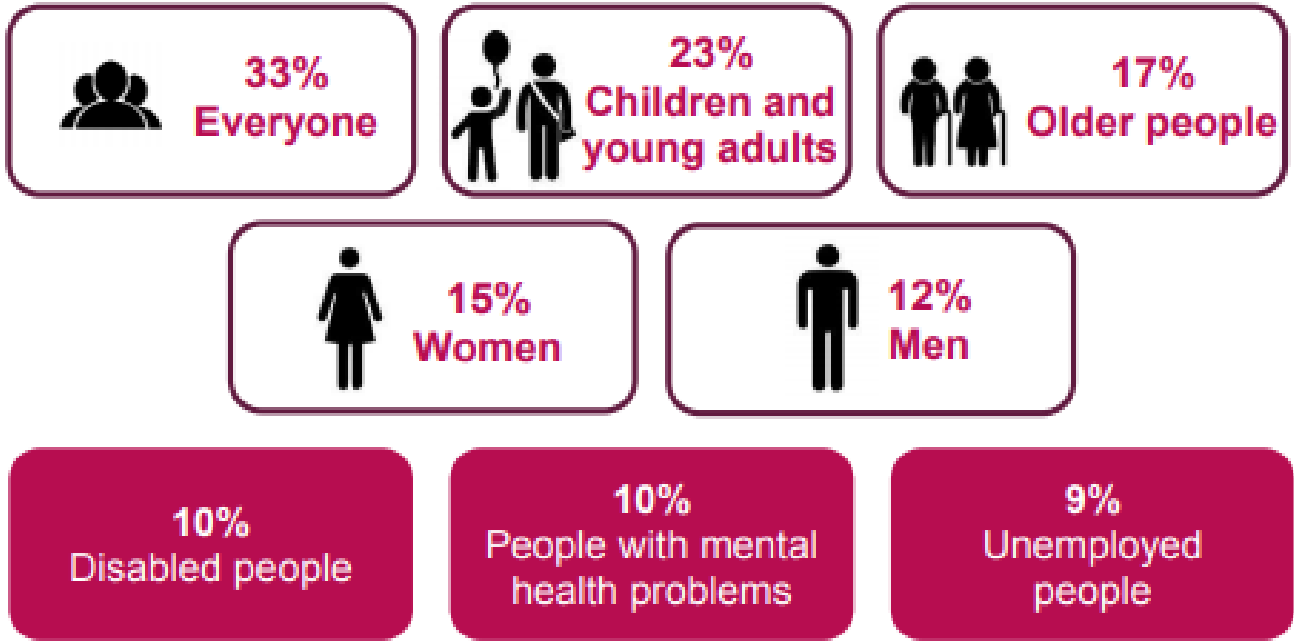
1.6 MILLION INTERVENTIONS

31% IN SPORT AND LEISURE

65% PLAN OR ARE WORKING WITH THE VCSE SECTOR

WHO BENEFITS FROM THIS WORK?

GM



ROCHDALE

- 36% EVERYONE
- 18% CHILDREN & YOUNG PEOPLE
- 20% OLDER PEOPLE
- 13% WOMEN & 14% MEN
- 18% PEOPLE WITH MENTAL HEALTH PROBLEMS
- 12% PEOPLE WITH A DISABILITY
- 11% PEOPLE WITH LEARNING DISABILITIES
- 7% ETHNICITY
- 8% SUBSTANCE ADDICTION

TYPES OF ORGANISATIONS IN ROCHDALE:

30% LOCAL VCSE

14% COMMUNITY/ NEIGHBOURHOOD

4% SOCIAL ENTERPRISE

9% COMMUNITY CENTRE/ VILLAGE HALL

3% FAITH GROUP

13% SPORTS CLUB

11% LOCAL BRANCH OR NATIONAL

WHERE DO THESE ORGANISATIONS WORK?

GM



ROCHDALE

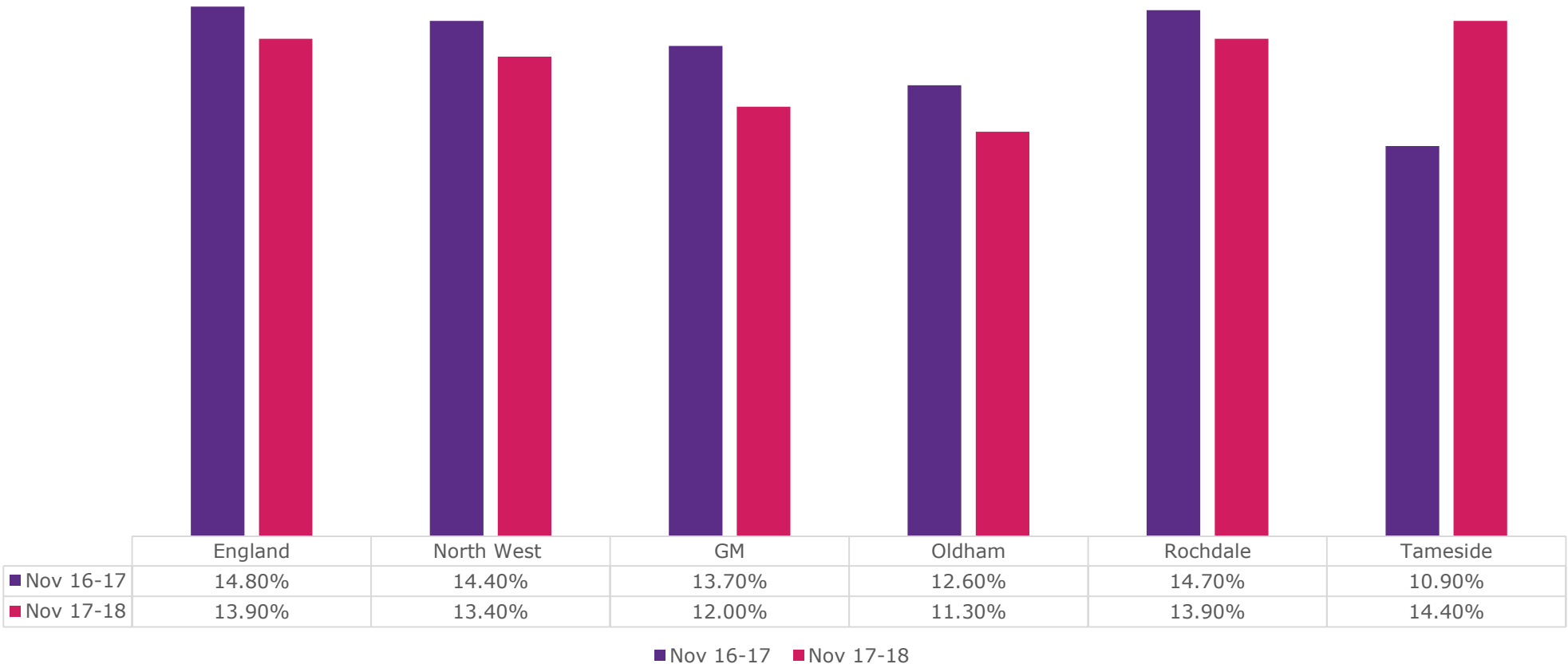
- 56% HEALTH AND WELLBEING**
- 32% COMMUNITY DEVELOPMENT**
- 31% SPORT AND PHYSICAL ACTIVITY**
- 21% EDUCATION, TRAINING AND RESEARCH**
- 15% ARTS, HERITAGE AND CULTURE**
- 15% SOCIAL CARE**
- 8% ACCOMMODATION & HOUSING**

GREATERSPORT

**VOLUNTEERING
ACTIVE LIVES**

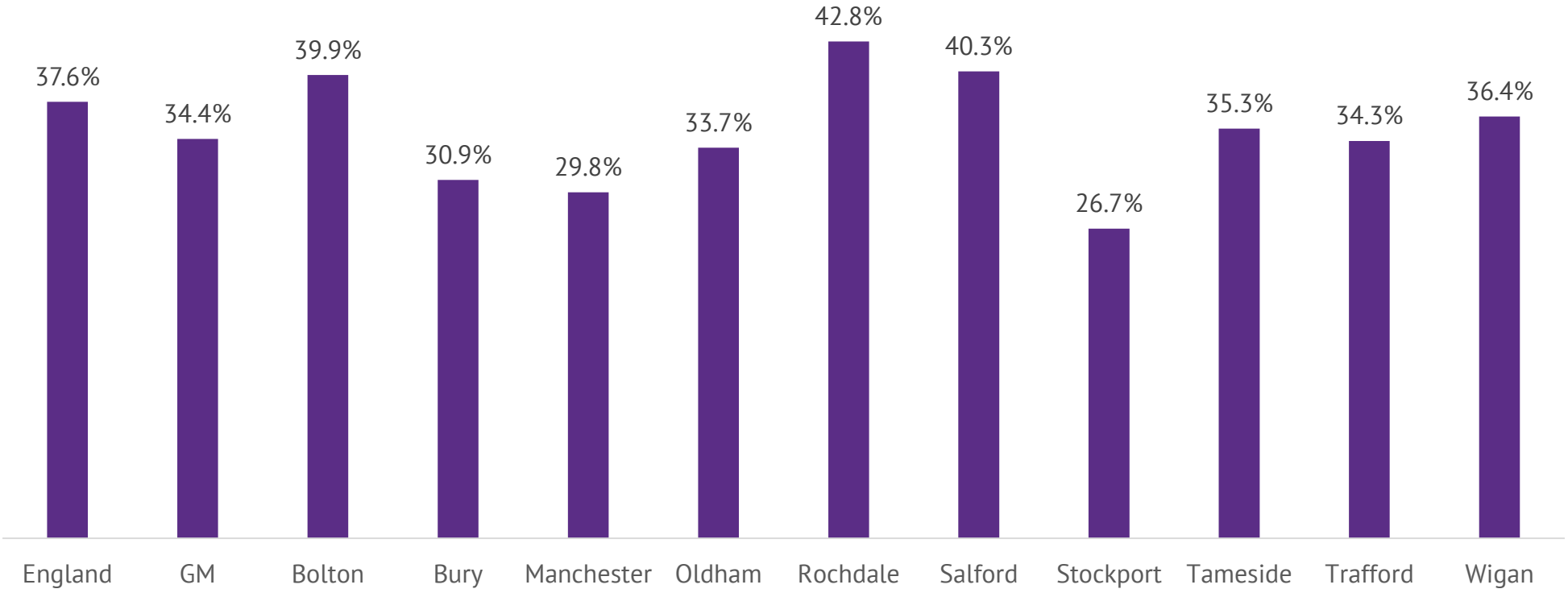


VOLUNTEERING – ACTIVE LIVES



VOLUNTEERING – ACTIVE LIVES

Volunteered at least twice in the last 12 months Years 5-11



KEY POINTS

UNEMPLOYED & NEET

According to state of the sector there is no specific mention of people who are unemployed benefitting from the work done in Rochdale, 5.8% of people are unemployed and 7.3% of young people are NEET.

LONG TERM HEALTH CONDITIONS/ DISABILITY

20.9% of people in Rochdale have a long term health condition or disability, compared to 17.6% in England and 19.43% in GM. People with long term health conditions are more likely to informally volunteer. 102.5 premature deaths in every 100k people happen in Rochdale, compared to 79.4 in England, 71.4 premature deaths due to CVD, compared to 46.7 and 30.1 premature deaths due to respiratory disease, compared to 18.6.

ETHNICITY/ FAITH GROUPS

3% of current VCSE organisations operate in Faith Groups, of those who benefit from the work, 7% are from ethnic backgrounds. Rochdale has high levels of BAME residents. Within Rochdale 13.9% of residents are Muslim, which is higher than both England and GM. The Asian population is 14.9%.